



CINDER SCHEMATIC LLP

FIRE LINE DO NOT CROSS

COMPANY PROFILE

Cinder Schematic LLP is a proud Indian Company that offers a comprehensive range of fire fighting solutions through a vast network of distributors worldwide. Manufactured in our own state-of-the-art facilities, this allows us the flexibility to produce products that cater to specific needs and standard.

Fire Fighting is responsibility and inventive – with this slogan we want to make an active contribution to the safety of people, property and productivity to the world. In order to fulfill this responsibility and invention we constantly work and promote the innovative ideas and expertise of our motivated team. We are a reliable, flexible and innovative partner, providing high quality automatic fire suppression system in any active or inactive zone. Fire can be happened in any time - off man or on man condition, day or night condition.

Reason on this demand we have come out to serve the best technology for Kitchen suppression, HT/LT panel suppression, Server/CNC Machine suppression, Vehicle suppression Foam suppression etc.

In line with our commitment in providing the most reliable firefighting solutions, we strive to continue delivering unrivalled protection through cutting edge technology and research to your people and property.

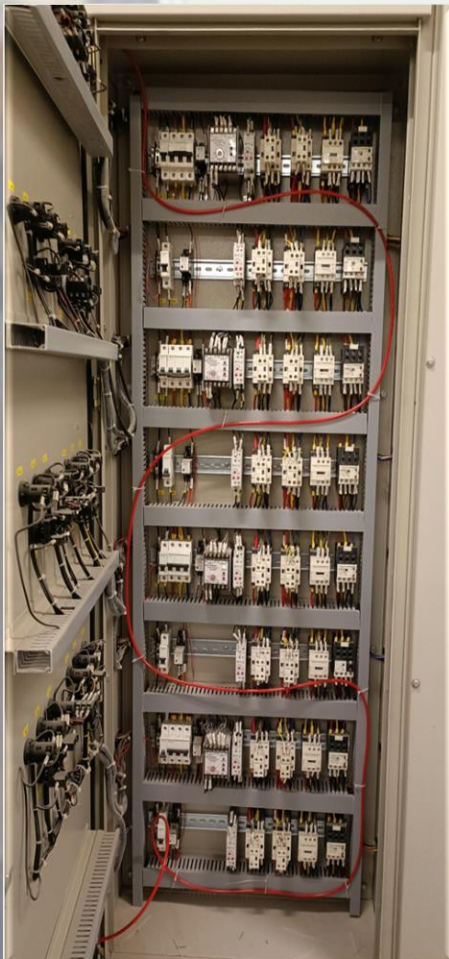
OUR CLIENTELE



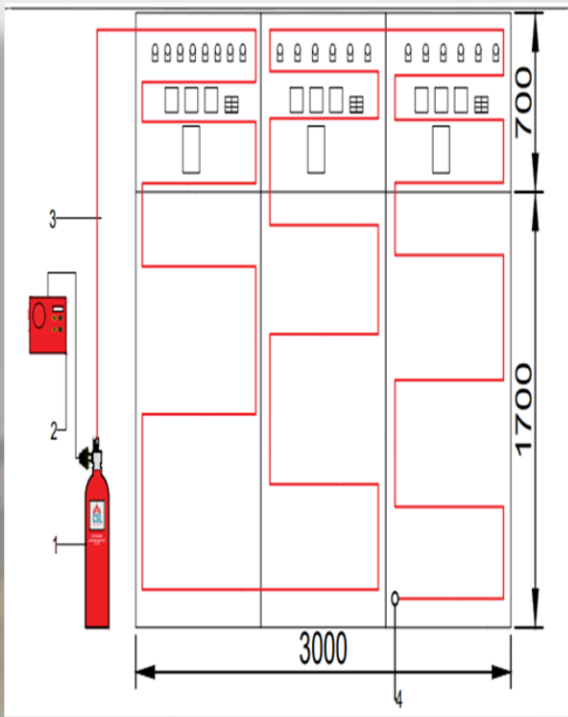
AUTOMATIC PANEL FIRE SUPPRESSION SYSTEM

Why Electrical Panel Suppression is needed?

- ❖ An electrical fire is a broad term that applies to a fire that was caused by an electrical problem. Similar to how grease fires start with grease, electrical fires start with an appliance, wiring, circuitry, or cables.
- ❖ There are two general ways that an electrical fire starts, a spark or overheating
- ❖ A major cause of electrical fires has to do with bad wiring. Some of the common causes are Frayed cords Loose wiring Poor insulation Undersized wires Faulty wires
- ❖ In any of these cases, wires can get too hot, start sparking, create arcs, and ignite flammable material in the area. The main purpose of a wire is to safely deliver electricity from your wall's outlet to a device like your toaster, for example. The problem arises when your outlet, wire, or toaster are defective. In fact, an issue in any three of these pieces to the puzzle can lead to a fire.



- ❖ Research shows mostly unexpected Electrical surge create a spark in electrical panel causes blaze fire in residential, commercial building, factory, Industry and injure people, death, property loss, downtime to business.
- ❖ CINDER Automatic Panel suppression system is Pre-Engineered, Reliable, Customer Friendly and cost-effective Automatic Fire detection and suppression system for single and multiple equipment against fire.
- ❖ CINDER Automatic Panel suppression system detect quickly and suppressed fire within a second and prevent the fire to spread it to other inflammable items.
- ❖ We follow the LPCB 1666 norms to design the system with 2Kg/ 4Kg and 6Kg capacity of extinguisher.



Benefits of CINDER Automatic Panel Fire Suppression System

- ❖ **Safety:** Clean agents are non-toxic and non-corrosive.
- ❖ **No Associated Damage:** Safe to use in applications with sensitive technology, electronics, and high-value assets as it is not based in water or powder
- ❖ **No Clean up:** Clean agents don't leave a residue.
- ❖ **Minimal Downtime:** With no damage and no clean-up no downtime.
- ❖ **Fast Acting:** Clean agent systems actuate in seconds. Since they extinguish fires effectively, most fire damage should be limited to a small area.

Technical Specification			
CYLINDER	<ul style="list-style-type: none"> ○ Aluminium ○ Mild Steel ○ Stainless Steel 	WORKING PRESSURE / TEMPERATURE	○ 15 Bar / 141 °C
VALVE	<ul style="list-style-type: none"> ○ Direct Low Pressure (DLP) Valve 	SENSOR (UL LISTED)	○ Polyvinyl Tube
PRESSURE SWITCH (UL LISTED)	<ul style="list-style-type: none"> ○ 0-4 Bar (Setting range) ○ Diaphragm: Polyamide Film 	EXTINGUISHING AGENT (UL LISTED)	○ Clean Agent (FK 5-1-12)



CINDER SCHEMATIC LLP

FOR MORE QUERY CONTACT US.

REGD. ADD.: SHOP NO. 2878, SANT NAGAR,
SHAKUR BASTI, PITAMPURA, NEW DELHI - 110034

E-MAIL ID: CINDER.SCHEMATICLLP@GMAIL.COM

WEBSITE: WWW.CINDER.CO.IN

PHONE: 6290146090 / 9205123462